

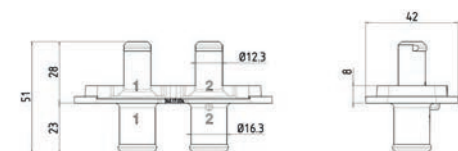
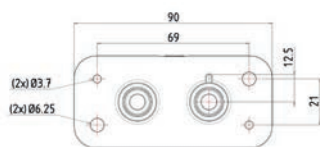
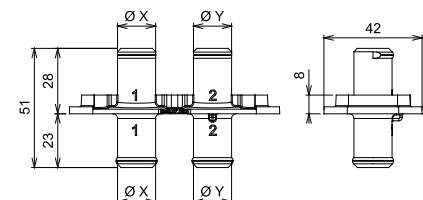
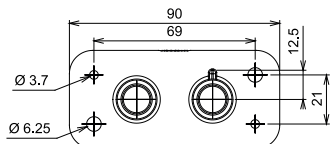
Raccords pour circuit d'eau

Water system connectors

Passer cloison droit

Straight bulkhead connector

- Pour tuyau de circulation d'eau de chauffage.
- Très utilisé sur cabine pour raccordement facile entre la cabine et la partie châssis du véhicule
- For heating water pipes
- Widely used on cabs, for easy connection between vehicle cab and chassis section



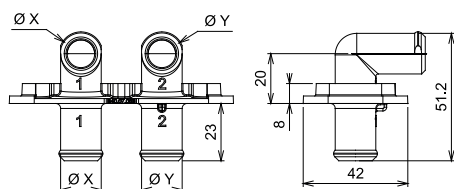
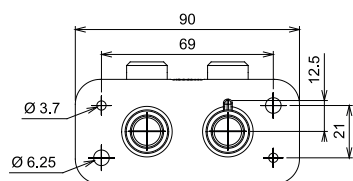
| | | |
|--------------------|-------------|-------|
| Matière / Material | PA 6.6+GF30 | |
| Reference | Ø X | Ø Y |
| 340.07.062 | 16 mm | 16 mm |



| | | |
|--------------------|-------------|-------|
| Matière / Material | PA 6.6+GF30 | |
| Reference | Ø | Ø |
| 340.17.034 | 12 mm | 16 mm |

Passer cloison coudé

Elbow bulkhead connector



| | | |
|--------------------|-------------|-------|
| Matière / Material | PA 6.6+GF30 | |
| Reference | Ø X | Ø Y |
| 340.07.063 | 16 mm | 16 mm |